

SINGLE-USE temperature USB PDF logger

Ideal solution for recording time-temperature data in transit



COMPACT, WATERPROOF AND SAFE

Features

- Automatic generation of reports in PDF format - firmware
- Low cost - one time use, no need to return to the sender of the load
- Built-in USB interface
- Compact (credit card format), waterproof (IP67), non-toxic - can be used to contact food
- Alarm indicator - flashing LED
- Individual requirements pre-programmed (duration, alarm limits, alarm delay, alarm mode, start delay)
- Certification according to CE, EN12830, RTCA-DO160G

Ideal Solution for

Pharmaceutical



Fisheries



Fruits/Vegetables



Meat & Poultry



Technical Information

Parameter	Description
Device Sensor	Temperature
Temperature Range	-30°C to 70°C
Accuracy	+/-0.5°C (-20 to 40°C) and +/-1°C for other
Record Days	Configurable 6,15,30,45,60,90.(Factory Settable)
Interval	Configurable w.r.t. Record days(Factory Settable)
Start Delay	Configurable (Factory Settable)
Alarm configuration	Upper and Lower alarm set point (Factory Settable)
Alarm delay	Upper and lower alarm delay in minutes,selectable 15,30,35,40,45,50,55,60 min(Factory Settable)
Battery	CR2032 Lithium Battery
Display	No
Indication LEDs	Green and Red color led for alarm and multifunction
Storage Condition	-4°F to 122°F (-20°C to 50.0°C) ,0% to 95%RH w/o condensation
Shelf Life	12 Months
Waterproof Rating	IP67 with upper plastic sealed
System Requirements	WIN XP//7/8/10 and MAC. Adobe Reader Software is required
Interface	USB 2.0
Report Format	PDF

This innovative temperature recorder has a miniature size (47.3 x 83 x 6 mm) less than a bank card format and weighs about 10 grams. Sending the goods you can put it in the packaging with the product.

During 6-90 days, the device will store the ambient temperature data in memory and your recipient can easily check the mode of transport by simply connecting the sensor to the computer via the built-in USB connector. Ideal for refrigerated transport.

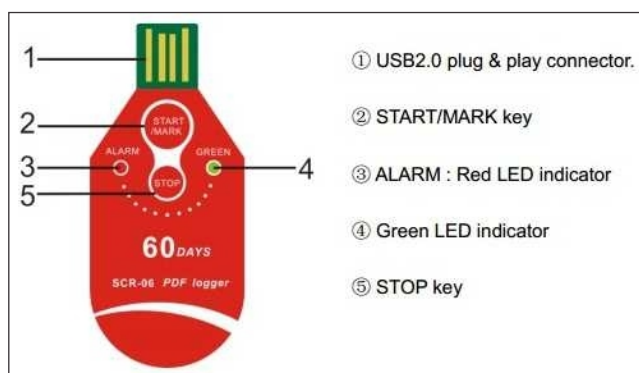
Setting Parameters:

- Operating time (6, 15, 30, 60 or 90 days)
- Upper and lower alarm limits (eg <+ 2 ° C and> + 8 ° C)
- Time alarm delay (default: 30 minutes)
- Temperature measurement interval (default: 6 min.)
- Start-up delay time (default setting: 0 min)

Applications:

Monitoring of the cold chain during transport of sensitive freight such as pharmaceuticals, foods and technical products. The logger is designed for single use only.

Quick Guide



PDF Reports

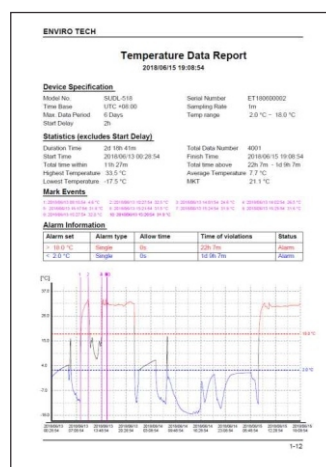


Table with columns: Date, Time, Temp, Alarm, Status, etc.